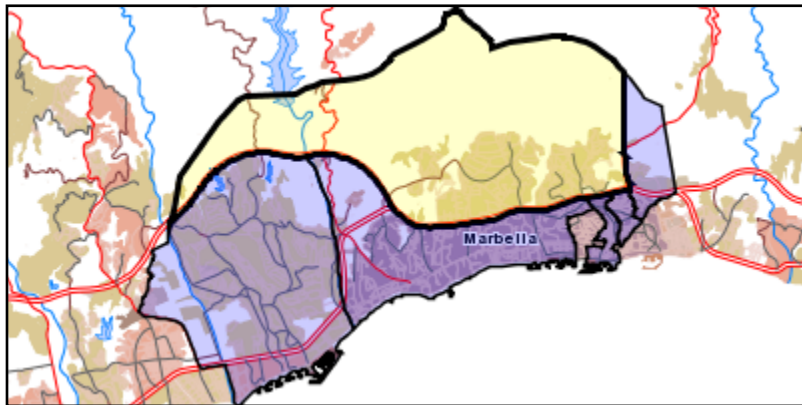




# Área de influencia escolar Marbella

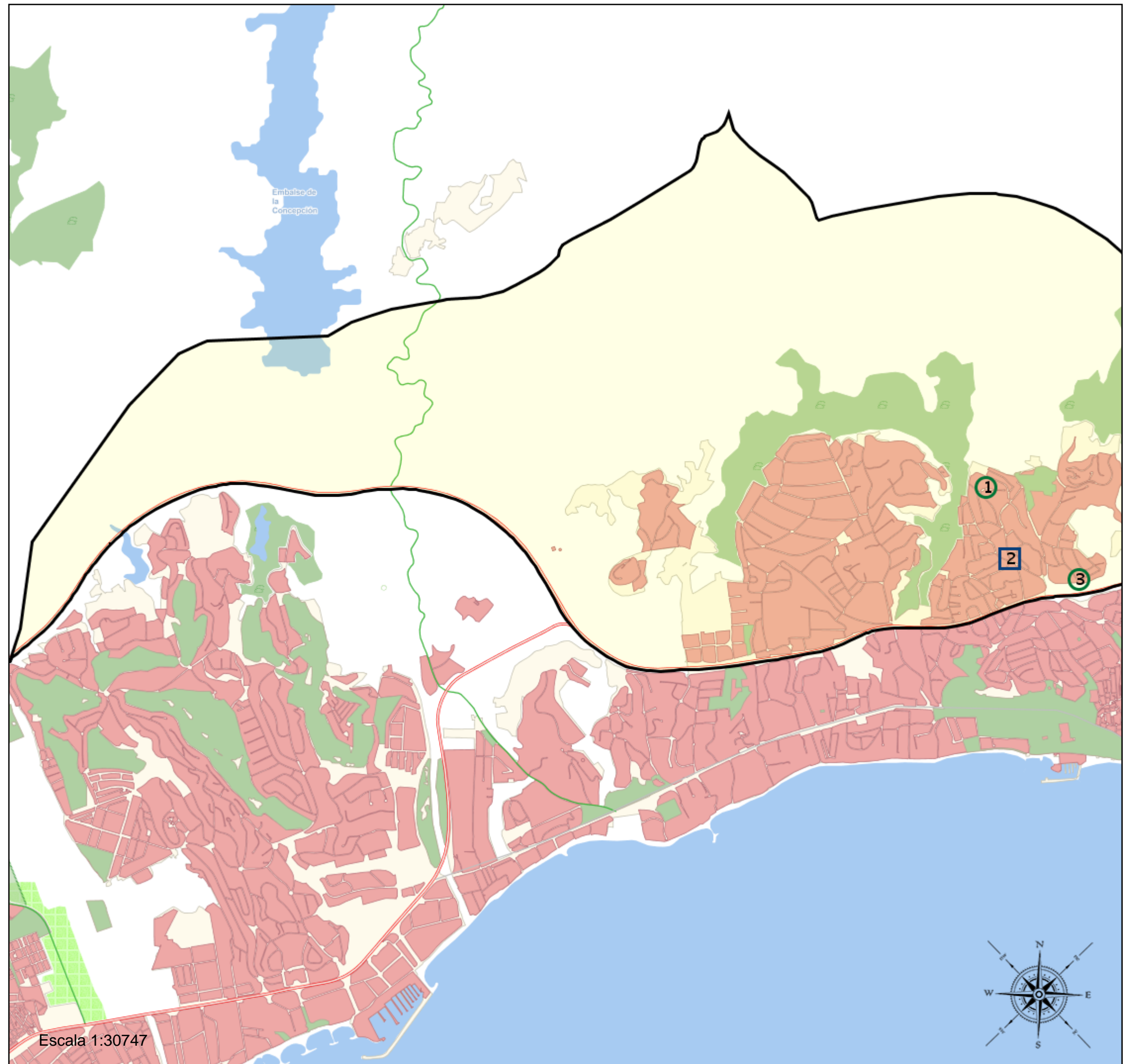
Marbella\_I\_P\_09  
29069\_I\_P\_09 (Segundo Cic. Infantil/Primaria)

- (1) 29007810 - C.E.I.P. Xarblanca
- (2) 29010237 - C.D.P. María Auxiliadora II
- (3) 29017268 - C.E.I.P. Mario Vargas Llosa



### Legenda

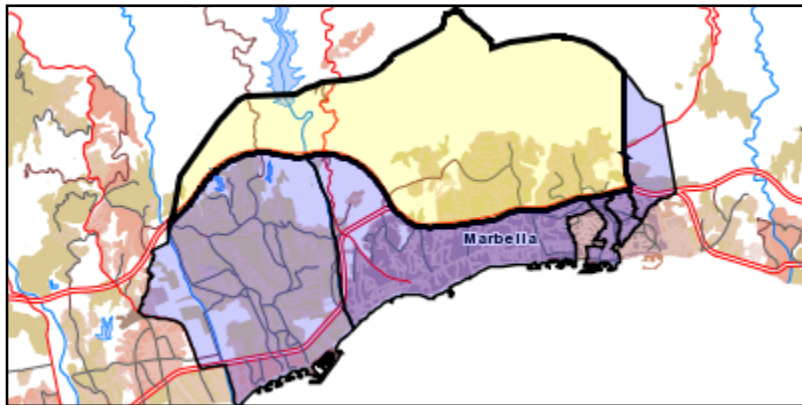
-  Centros públicos
-  Centros concertados



# Área de influencia escolar Marbella

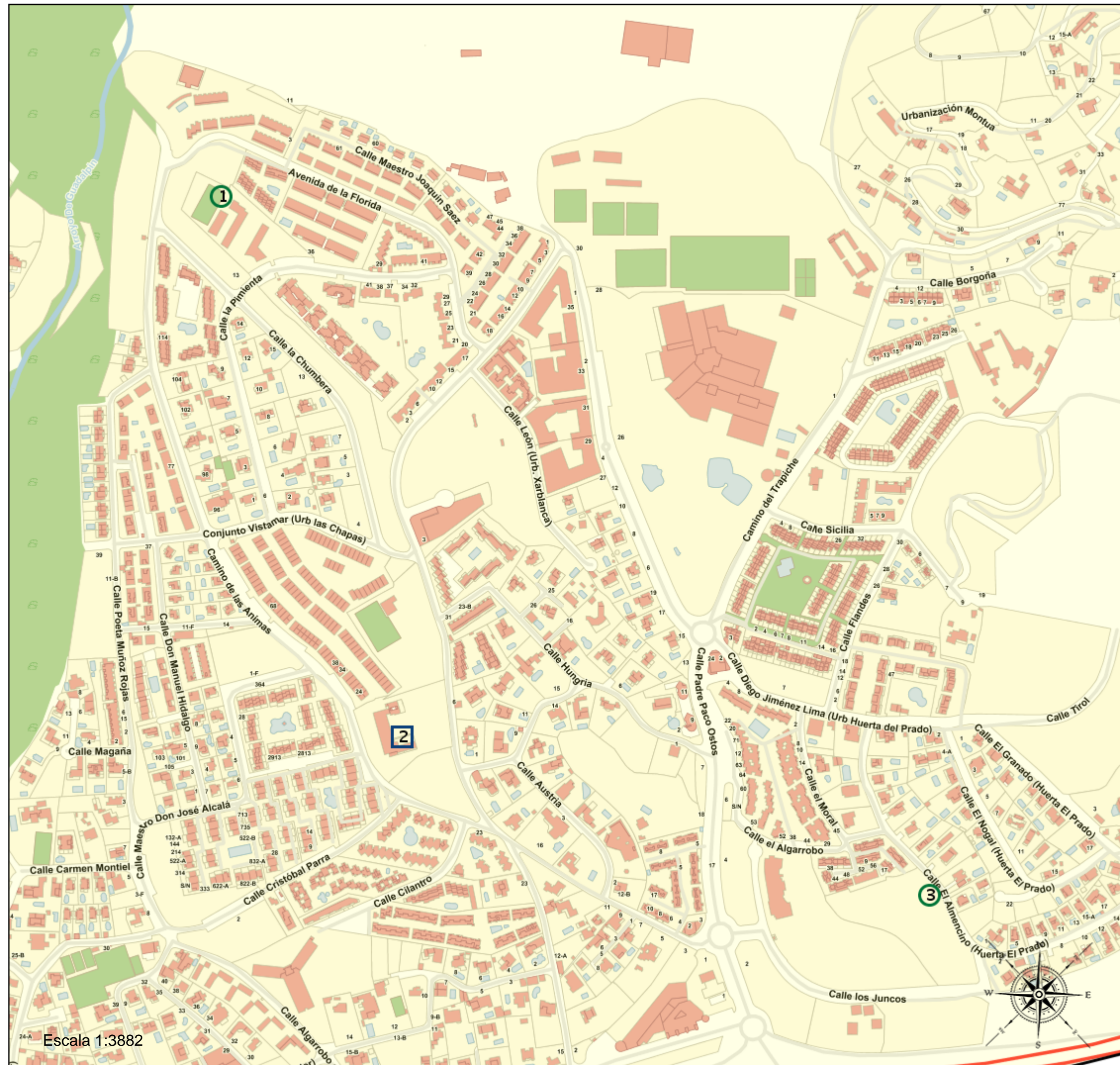
Marbella\_I\_P\_09  
29069\_I\_P\_09 (Segundo Cic. Infantil/Primaria)

- (1) 29007810 - C.E.I.P. Xarblanca
- (2) 29010237 - C.D.P. María Auxiliadora II
- (3) 29017268 - C.E.I.P. Mario Vargas Llosa



### Leyenda

- Centros públicos
- Centros concertados



Escala 1:3882

